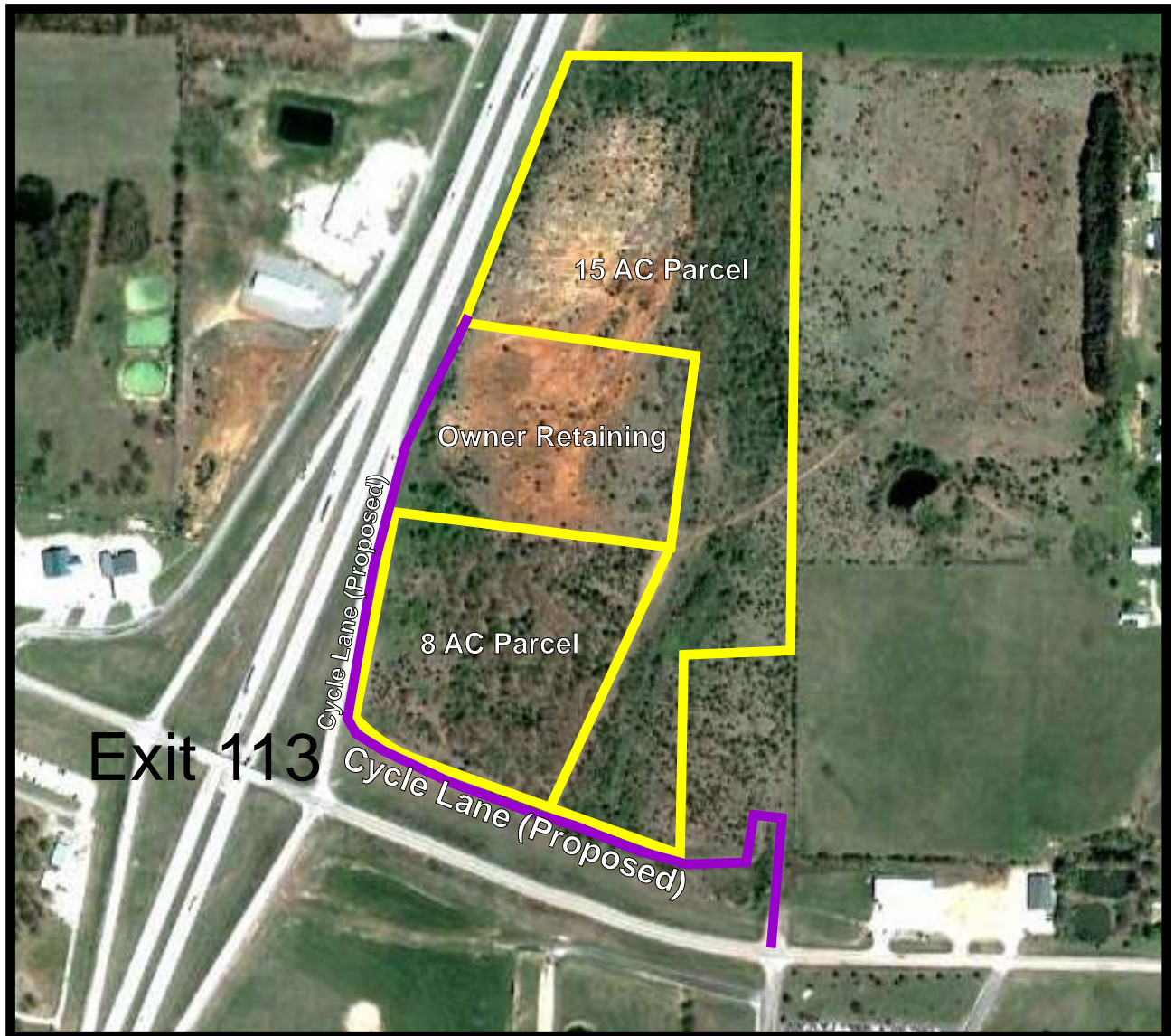


# Prime Property at I-44 Interchange



**MLS 1113530 - 8 Ac**  
**MLS 1113533 - 15 Ac**  
City Water & Electricity  
Recorded Easement to Property



*Shown by*  
**Hoover Case**  
**417-859-3204 - Office**  
**417-844-6020 - Cell**

Neither The Case Company nor the property owner guarantees absolute accuracy of supplied information.