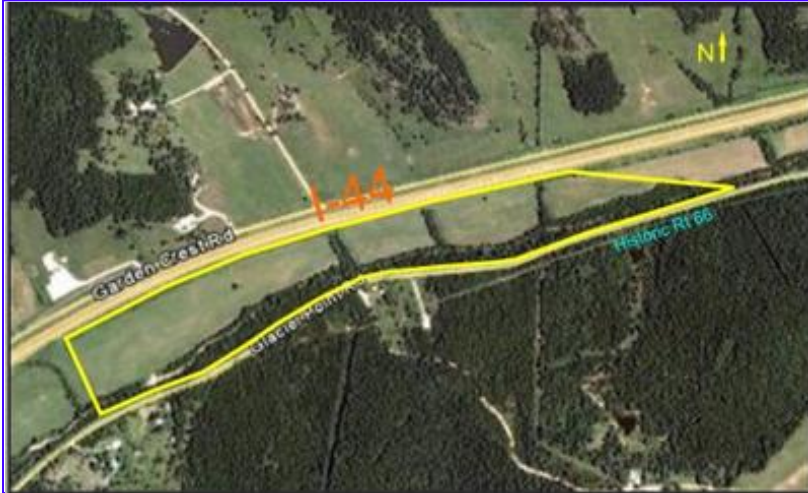


# Interstate Frontage Acreage

The Case Company Real Estate & Auction Services

417-859-3204



## Property Highlights

- Price: \$172,000.00
- Acres: 63.00
- County: Laclede
- State: Missouri
- Closest City: Lebanon
- Property Type: Commercial

## Driving Directions

I-44, exit 135 just east of Lebanon, MO. South from overpass to left onto Old Historic Road Rte 66 approximately 1 mile to property on left.

## Property Description

Level property with I-44 frontage/visibility. 90% open, level vacant land. Very close to I-44 interchange (1+/- mile). Great developmental possibilities for commercial or industrial. 1 mile +/- state highway road frontage.



Hoover and Susan Case  
417-859-3204  
221 S Marshall St  
Marshfield , MO 65706  
[www.caserealestatecompany.com](http://www.caserealestatecompany.com)

More details at  
[www.landsofmissouri.com/listing/886342](http://www.landsofmissouri.com/listing/886342)